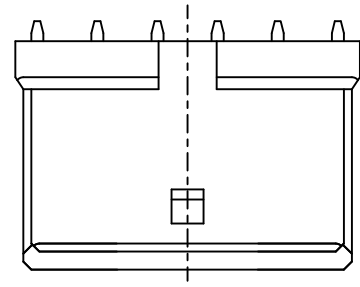
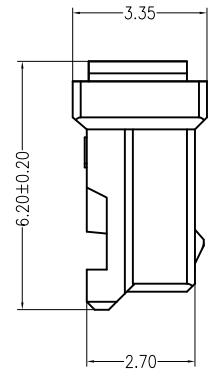
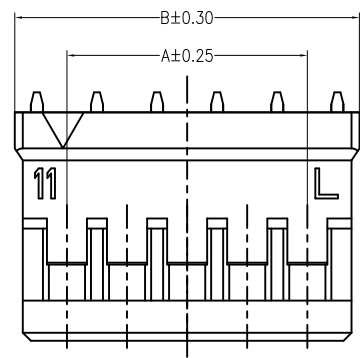
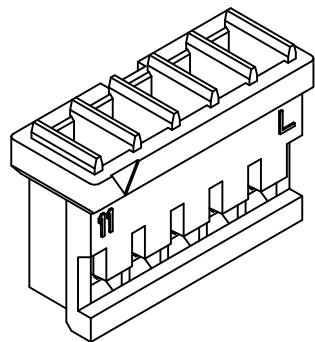
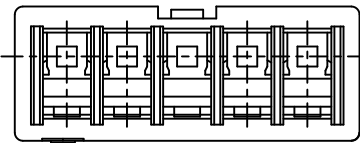


REV	DESCRIPTION	DESIGN	DATE
A	NEW RELEASE	蒋建银	2020/12/16

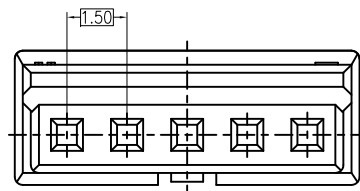
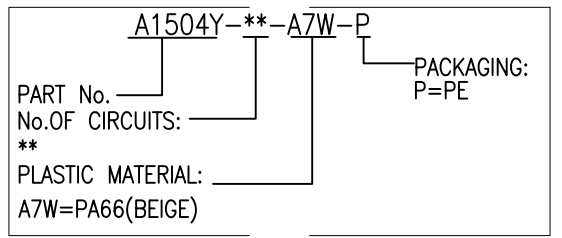
PIN.	DIM A	DIM B
2pin	1.50	4.10
3pin	3.00	5.60
4pin	4.50	7.10
5pin	6.00	8.60
6pin	7.50	10.10
7pin	9.00	11.60
8pin	10.50	13.10
9pin	12.00	14.60
10pin	13.50	16.10
11pin	15.00	17.60
12pin	16.50	19.10
13pin	18.00	20.60
14pin	19.50	22.10
15pin	21.00	23.60



Specifications:

- Contact resistance: ≤20mΩ
- Insulation resistance: ≥500MΩ
- Rated voltage: 250V AC DC
- Rated current: 3.0A AC DC
- Withstand Voltage: 1000V AC/minute
- Temperature Range: -25°C ~ +85°C
- Housing: PA66 UL94V-0, Natural (Beige)

ORDER INFORMATION:



JKUN 温州健坤接插件有限公司 WENZHOU JKUN CONNECTOR CO.,LTD.		TITLE: 1.5mm housing	
GENERAL TOLERANCE		USE: CUSTOMER	PART NO.:
X. ±0.50	X. ±5°	APPD: 王锋	A1504Y-**-A7W-P
X.X ±0.30	X.X ±2°	CHKD: 曾令青	DWG NO.:
X.XX ±0.20	X.XX ±1°	DR: 蒋建银	JKUN-GCKH-0623
UNITS: mm		SCALE 1 : 1	SHEET 1 / 1