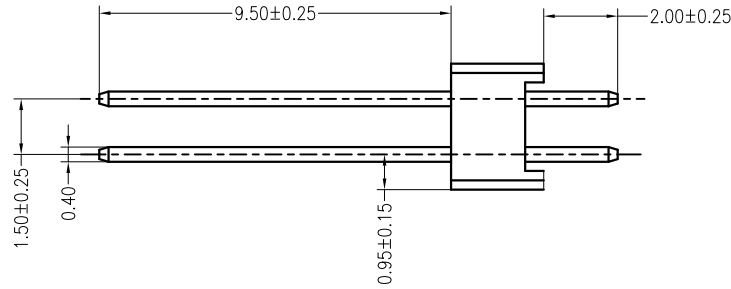
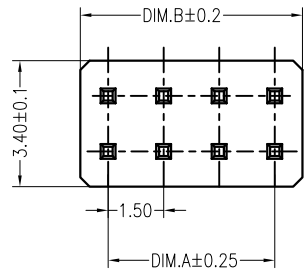


Customized products

MOQ

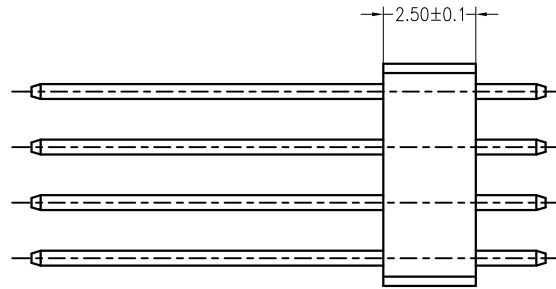
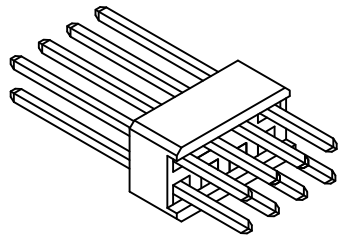
50000PCS

REV	DESCRIPTION	DESIGN	DATE
X0	NEW RELEASE	蒋建银	2019/08/16

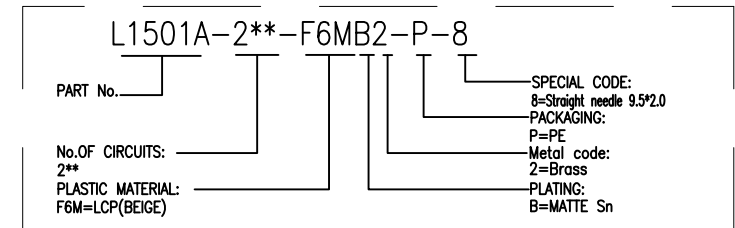


**Specifications:**

Poles: 04 to 16  
 Contact resistance:  $\leq 30m\Omega$   
 Insulation resistance:  $\geq 500M\Omega$   
 Rated voltage: 250V AC DC  
 Rated current: 1.0A AC DC  
 Withstand Voltage: 500V AC/minute  
 Temperature Range:  $-40^{\circ}C \sim +110^{\circ}C$   
 Housing: LCP UL94V-0, Natural (Beige)  
 Contacts: Brass/MATTE Sn-plated

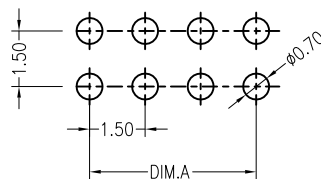


**ORDER INFORMATION:**



PIN.	DIM A	DIM B
2*2	1.50	3.00
2*3	3.00	4.50
2*4	4.50	6.00
2*5	6.00	7.50
2*6	7.50	9.00
2*7	9.00	10.50
2*8	10.50	12.00

**PCB LAYOUT**



JKUN 温州健坤接插件有限公司 WENZHOU JKUN CONNECTOR CO.,LTD.			TITLE: 1.5mmPitch 180°wafer dip type	
GENERAL TOLERANCE		USE:	PART NO.:	
X. ±0.50	X. ±5°	CUSTOMER	L1501A-2**-F6MB2-P-8	
X.X ±0.30	X.X ±2°	APPD: 刘振岭	DWG NO.:	
X.XX ±0.20	X.XX ±1°	CHKD: 王亮	JKUN-GCKH-1430	
UNITS: mm		DR: 蒋建银	SCALE	SHEET
			1 : 1	1 / 1