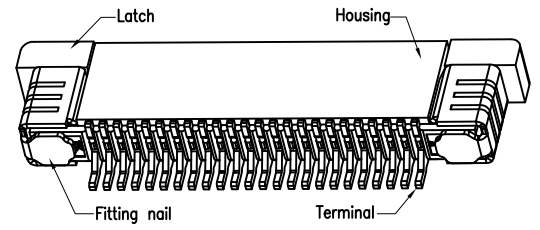
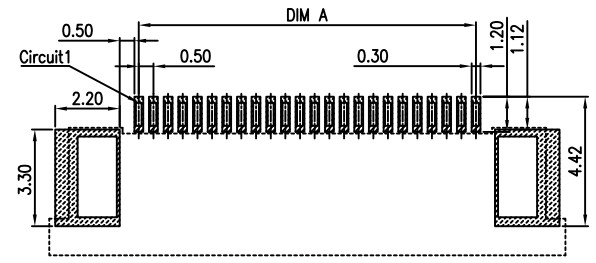
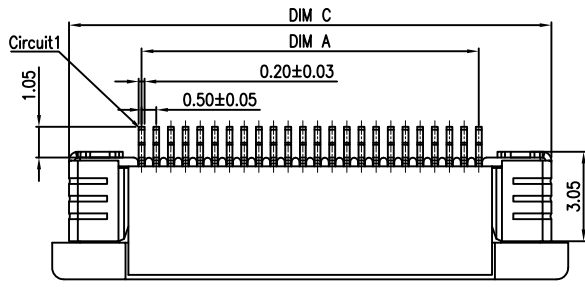
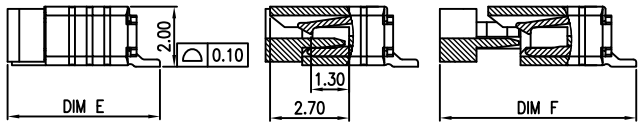
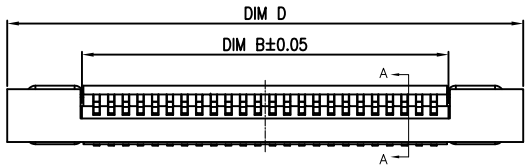


REV	DESCRIPTION	DESIGN	DATE
A	NEW RELEASE	Ryan	2021/03/18



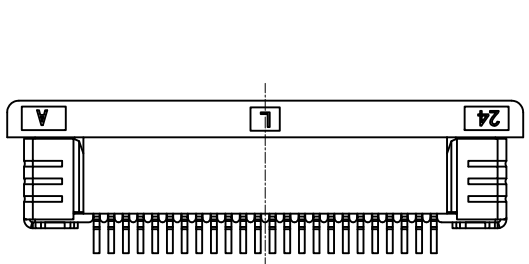
PCB layout



SECTION A-A SCALE 1:1

SECTION A-A SCALE 1:1

CKT	DIM A	DIM B	DIM C	DIM D	DIM E	DIM F	CKT	DIM A	DIM B	DIM C	DIM D	DIM E	DIM F
4	1.50	2.50	6.45	7.60			33	16.00	17.00	20.95	22.10		
5	2.00	3.00	6.95	8.10			34	16.50	17.50	21.45	22.60	5.20	6.70
6	2.50	3.50	7.45	8.60			35	17.00	18.00	21.95	23.10		
7	3.00	4.00	7.95	9.10			36	17.50	18.50	22.45	23.60		
8	3.50	4.50	8.45	9.60			37	18.00	19.00	22.95	24.10		
9	4.00	5.00	8.95	10.10			38	18.50	19.50	23.45	24.60		
10	4.50	5.50	9.45	10.60			39	19.00	20.00	23.95	25.10		
11	5.00	6.00	9.95	11.10			40	19.50	20.50	24.45	25.60		
12	5.50	6.50	10.45	11.60			41	20.00	21.00	24.95	26.10		
13	6.00	7.00	10.95	12.10			42	20.50	21.50	25.45	26.60		
14	6.50	7.50	11.45	12.60			43	21.00	22.00	25.95	27.10		
15	7.00	8.00	11.95	13.10			44	21.50	22.50	26.45	27.60		
16	7.50	8.50	12.45	13.60			45	22.00	23.00	26.95	28.10		
17	8.00	9.00	12.95	14.10			46	22.50	23.50	27.45	28.60		
18	8.50	9.50	13.45	14.60			47	23.00	24.00	27.95	29.10	5.75	7.25
19	9.00	10.00	13.95	15.10			48	23.50	24.50	28.45	29.60		
20	9.50	10.50	14.45	15.60			49	24.00	25.00	28.95	30.10		
21	10.00	11.00	14.95	16.10			50	24.50	25.50	29.45	30.60		
22	10.50	11.50	15.45	16.60			51	25.00	26.00	29.95	31.10		
23	11.00	12.00	15.95	17.10			52	25.50	26.50	30.45	31.60		
24	11.50	12.50	16.45	17.60			53	26.00	27.00	30.95	32.10		
25	12.00	13.00	16.95	18.10			54	26.50	27.50	31.45	32.60		
26	12.50	13.50	17.45	18.60			55	27.00	28.00	31.95	33.10		
27	13.00	14.00	17.95	19.10			56	27.50	28.50	32.45	33.60		
28	13.50	14.50	18.45	19.60			57	28.00	29.00	32.95	34.10		
29	14.00	15.00	18.95	20.10			58	28.50	29.50	33.45	34.60		
30	14.50	15.50	19.45	20.60			59	29.00	30.00	33.95	35.10		
31	15.00	16.00	19.95	21.10			60	29.50	30.50	34.45	35.60		
32	15.50	16.50	20.45	21.60									

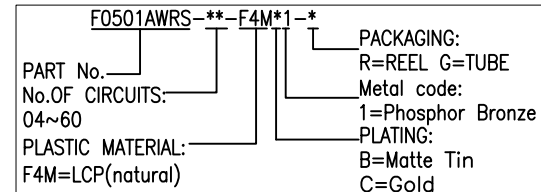


(DIM A+1)±0.05

FFC/FPC

**Specifications:**  
Housing:High temperature plastic UL94V-0;Color:natural  
Latch:High temperature plastic UL94V-0;Color:black  
Terminal:Copper alloy, Matte Tin/Gold  
Fitting Nail:Copper alloy, Matte Tin  
Product must comply HF RoHS specification  
Contact resistance:≤30mΩ  
Insulation resistance:≥100MΩ  
Rated voltage:50V AC/DC  
Rated current:0.5A AC/DC  
Withstand Voltage: 250V AC/minute  
Temperature Range:-25°C~+85°C

ORDER INFORMATION:



**JKUN** 温州健坤接插件有限公司  
WENZHOU JKUN CONNECTOR CO.,LTD.

GENERAL TOLERANCE		USE:	CUSTOMER
X.X ±0.15	X. ±5'	APPD:	Shaojinghe
X.XX ±0.10	X.X ±2'	CHKD:	Shaojinghe
X.XXX ±0.05	X.XX ±1'	DR:	Ryan
		UNITS:	mm

TITLE:		FPC Pitch0.5 H2.0 ZIF CONN. SMT Upper Type	
PART NO.:		F0501AWRS-**-F4M*1-*	
DWG NO.:		JKUN-GCKH-0960	
SCALE	SHEET		
1 : 1	1 / 1		